



House & Land Package

From **\$553,261***

Banksia 225

4 | 2 | 2

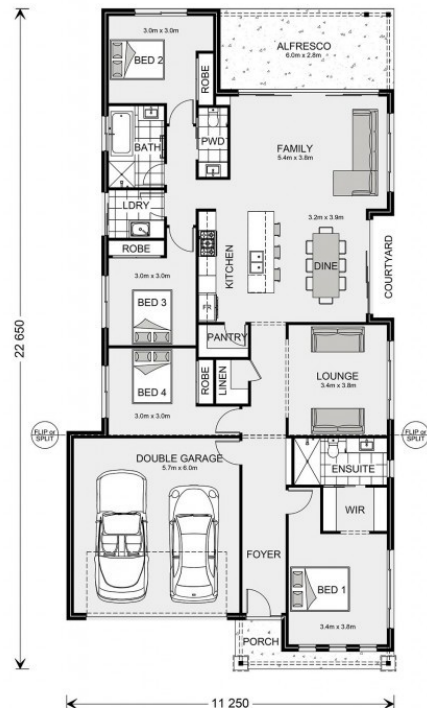
4 Wanera St, Swan hill

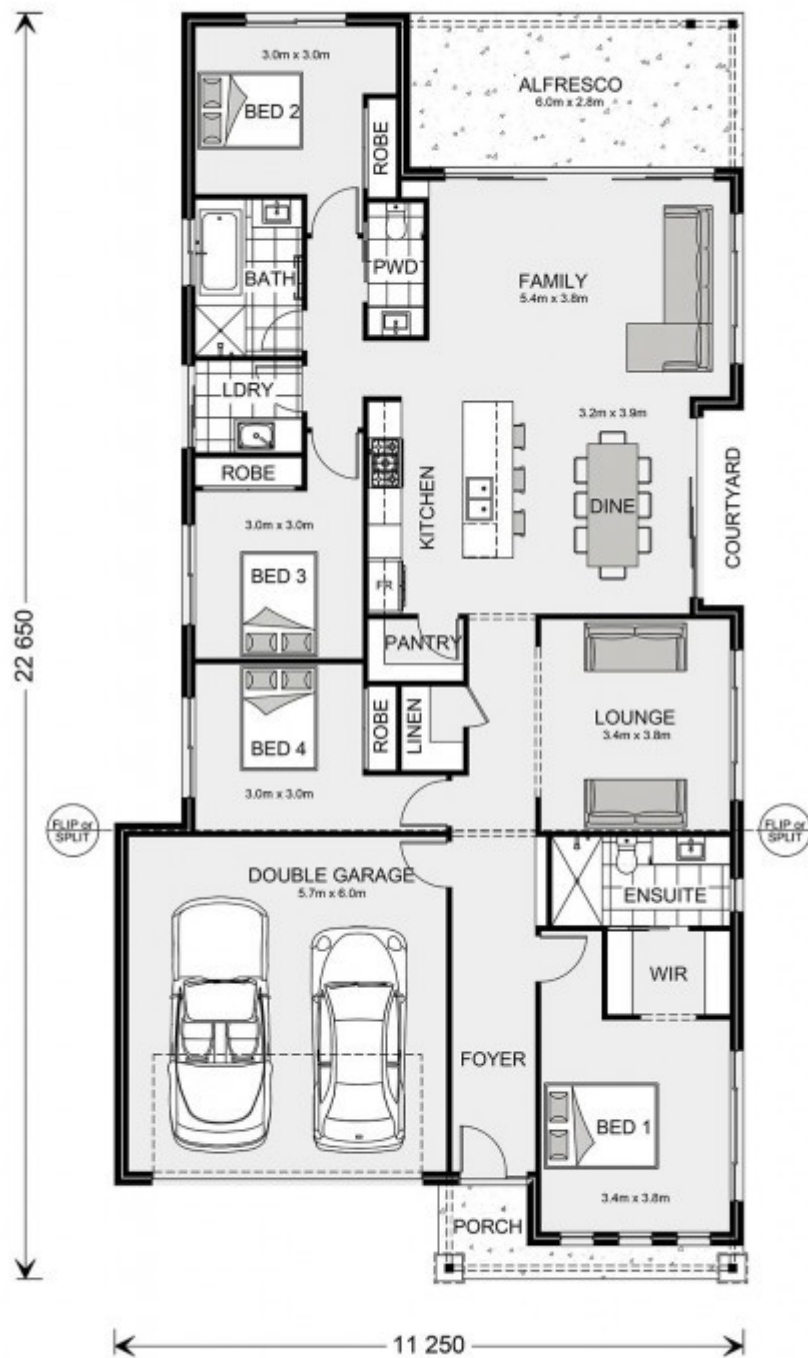
Floor Area: 225 m² Land Area: 1006 m²

Contact **0428340533**

Inclusions:

- + Master Suite to the Front
- + Hamptons Streetscape Facade
- + Automatic Garage door
- + Westinghouse Oven, ceramic cooktop and rangehood
- + Concrete allowance for Driveway & Crossover
- + Walk in Pantry





* Package price is based on Banksia 225 standard floor plan and standard façade (may be smaller than façade shown). Package may be subject to developer's design review panel, council final approval and G.J. Gardner Homes procedure of purchase. Package price excludes stamp duty on land, legal fees and conveyancing costs (including 6 Legal/74189757_2 transfer of title and searches). Prices are current as of the date of printing and are inclusive of GST. Prices may change without notice. Packages are subject to availability. Package subject to two separate contracts relating to the building and the land respectively. Photographs may depict fixtures, finishes and features not supplied by G.J Gardner Homes. Excluded items may include but are not limited to landscaping items such as planter boxes, retaining walls, water features, pergolas, screens, driveways and decorative items such as fencing and outdoor kitchens or barbecues. Photographs may also depict inclusions not forming part of the standard design and which may be subject to additional costs. This design and illustration remains the property of G.J Gardner Homes and may not be reproduced in whole or in part without written consent. For detailed home pricing, please talk to a New Homes Consultant or visit our website at <http://www.gjgardner.com.au/house-and-land-pricing>. Swan Hill trading as G.J. Gardner Homes 400 Campbell St, Swan Hill, Victoria, 3585, Australia. Builders License Hinton Building Pty Ltd, CDB-U 48589. .