



House & Land Package

From **\$452,076***

Nova 170

3 2 2

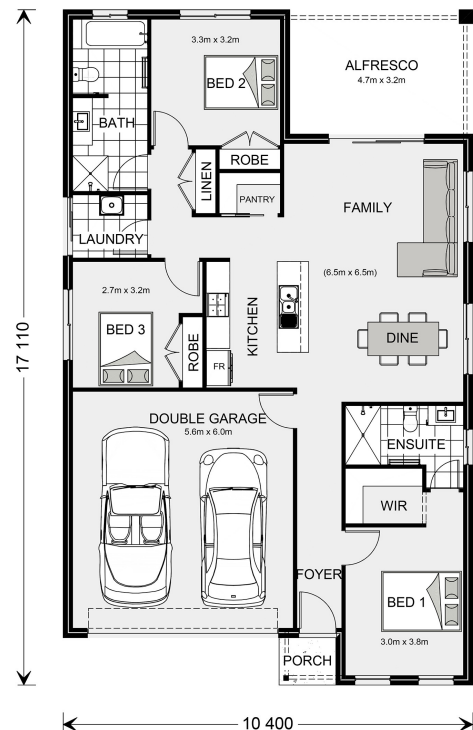
Lot 41 23 Alexander Ave, Naracoorte

Land Area: 557 m²

Contact **Meg Dohse** on **0427 836 343**

Inclusions:

- + Turn Key House and land Package to be constructed
- + Land titles by developer proposed date end Decemember 2024
- + Package includes - Select Inclusions, Rinnai 250lt Heat Pump, Double glazing ,Floorcoverings, SplitSystem Air Conditioner, Blinds , Clothesline and External concrete.
- + Contact Meg Dohse at GJ Gardner Homes - Naracoorte on 0427836343 for more information





* Package price is based on Nova 170 standard floor plan and standard façade (may be smaller than façade shown). Package may be subject to developer's design review panel, council final approval and G.J. Gardner Homes procedure of purchase. Package price excludes stamp duty on land, legal fees and conveyancing costs (including 6 Legal/74189757_2 transfer of title and searches). Prices are current as of November 11, 2024 and are inclusive of GST. Prices may change without notice. Packages are subject to availability. Package subject to two separate contracts relating to the building and the land respectively. Photographs may depict fixtures, finishes and features not supplied by G.J Gardner Homes. Excluded items may include but are not limited to landscaping items such as planter boxes, retaining walls, water features, pergolas, screens, driveways and decorative items such as fencing and outdoor kitchens or barbecues. Photographs may also depict inclusions not forming part of the standard design and which may be subject to additional costs. This design and illustration remains the property of G.J Gardner Homes and may not be reproduced in whole or in part without written consent. For detailed home pricing, please talk to a New Homes Consultant or visit our website at <https://www.gjgardner.com.au/house-and-land-pricing>. R & M Homes Pty Ltd trading as G.J.Gardner Homes Franchise - Naracoorte. Builders License 224920.