



House & Land Package

From **\$994,274***

Bridgewater 205

4 Beds | 2 Baths | 2 Car

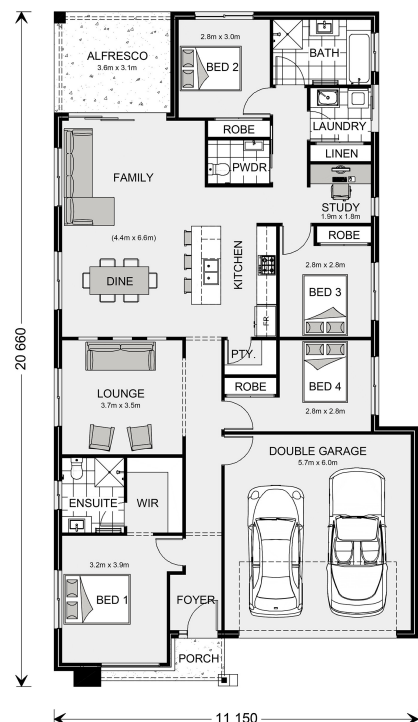
52 Capestone Estate, Mango Hill

Land Area: 400 m²

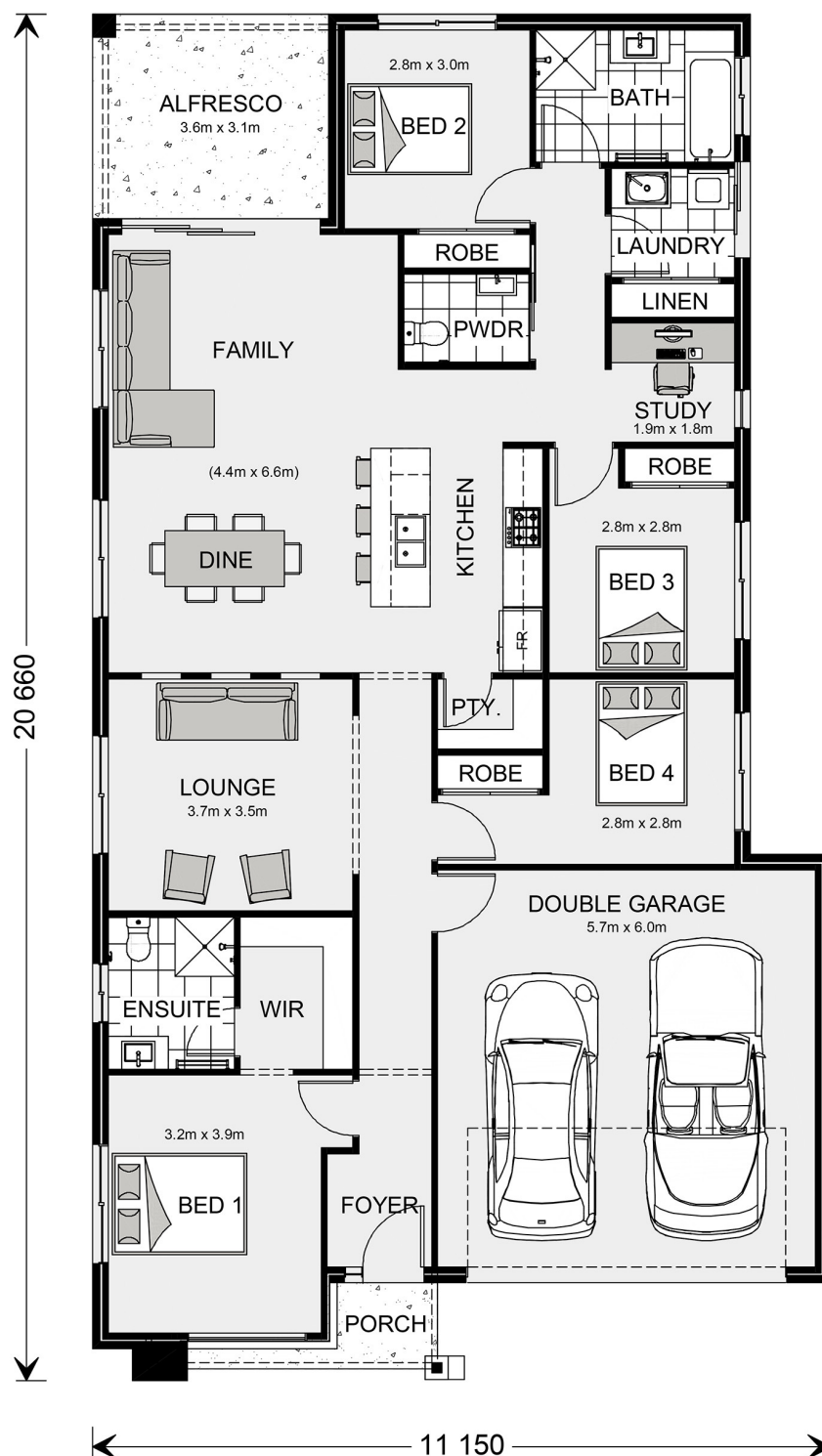
Contact **Louise Newton** on **0487 326 041**

Inclusions:

+ A few inclusions are: Executive/Hamptons/Resort or Beach Facade options, Colourbond Roof, Concrete to Driveway, Porch & Alfresco, TV Antenna, Clothesline & Letterbox. Westinghouse 600mm appliances including Dishwasher. Wall hung vanities, Tiled Showerbases with Tiled Niches to Ensuities & Bathrooms. Carpet to Bedrooms & Vinyl boards to all main living, Tiles to Wet areas, Square set cornice, Downlights, Clipsal Iconic Switches. Option to customise both inclusions & design layout/façade.



* Price listed is indicative only and does not include stamp duty, legal fees or conveyancing costs. Images may depict optional upgrades including fixtures, fencing, landscaping, features, facades, finishes and/or other items which are not included in the stated price. Further information overleaf. For further information, please talk to a New Homes Consultant or visit our website at <https://www.gjgardner.com.au/house-and-land-pricing>.



* Package price is based on Bridgewater 205 standard floor plan and standard façade (may be smaller than façade shown). Package may be subject to developer's design review panel, council final approval and G.J. Gardner Homes procedure of purchase. Package price excludes stamp duty on land, legal fees and conveyancing costs (including 6 Legal/74189757_2 transfer of title and searches). Prices are current as of May 20, 2024 and are inclusive of GST. Prices may change without notice. Packages are subject to availability. Package subject to two separate contracts relating to the building and the land respectively. Photographs may depict fixtures, finishes and features not supplied by G.J. Gardner Homes. Excluded items may include but are not limited to landscaping items such as planter boxes, retaining walls, water features, pergolas, screens, driveways and decorative items such as fencing and outdoor kitchens or barbeques. Photographs may also depict inclusions not forming part of the standard design and which may be subject to additional costs. This design and illustration remains the property of G.J. Gardner Homes and may not be reproduced in whole or in part without written consent. For detailed home pricing, please talk to a New Homes Consultant or visit our website at <https://www.gjgardner.com.au/house-and-land-pricing>. CMPV Pty Ltd trading as G.J. Gardner Homes Brisbane Outer North. Builders License 15358225.