



House & Land Package

From **\$986,157***

Edgewater 205

4 Beds | 2 Baths | 2 Car Spaces

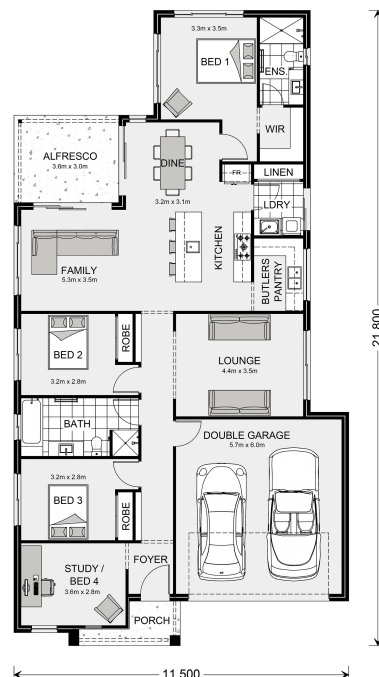
4036 Sundowner Circuit, Upper Kedron

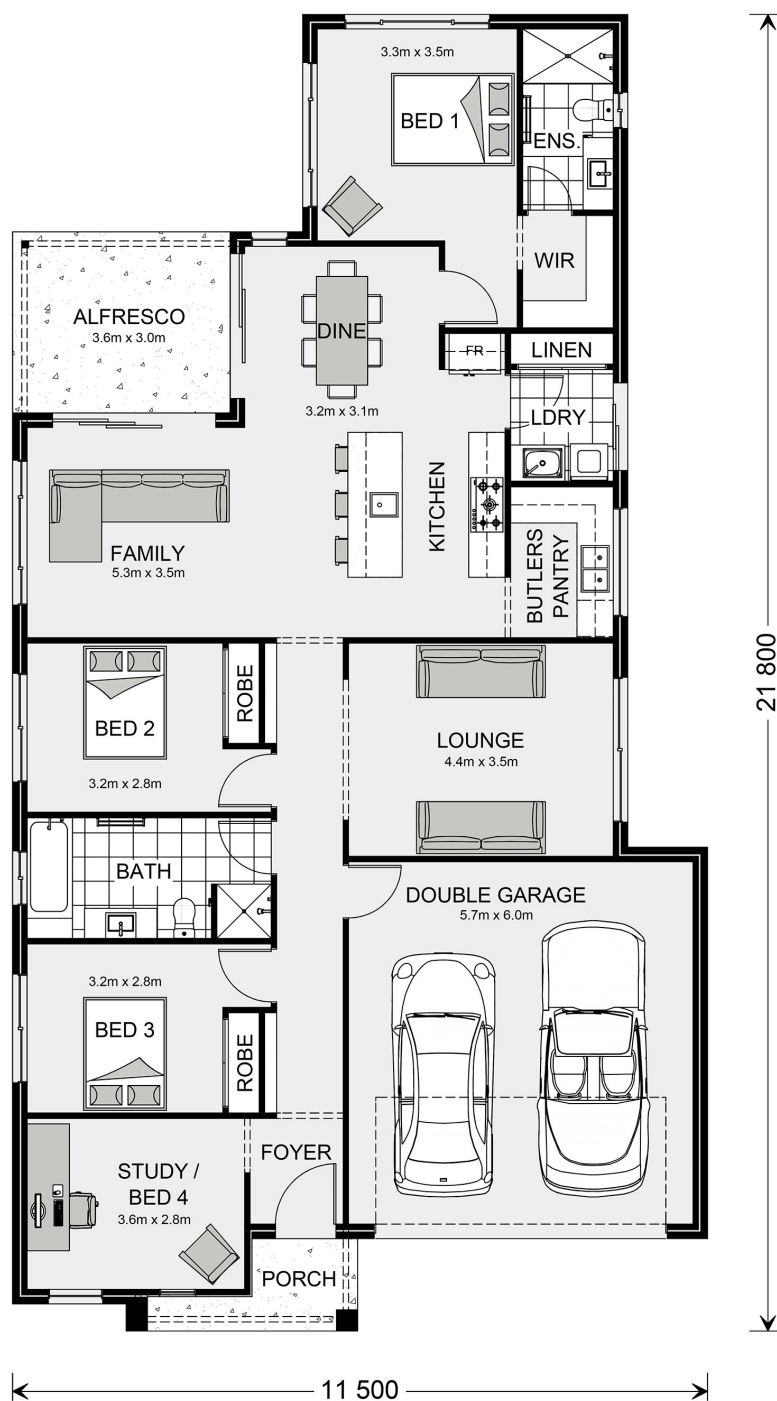
Land Area: 400 m²

Contact **Jason Crawford** on 0415 154 744

Inclusions:

- + "M" class soil
- + 20mm Stone Benchtops
- + Dishwasher
- + Daikin Air Conditioning
- + Exposed Aggregate Driveway





* Package price is based on Edgewater 205 standard floor plan and standard façade (may be smaller than façade shown). Package may be subject to developer's design review panel, council final approval and G.J. Gardner Homes procedure of purchase. Package price excludes stamp duty on land, legal fees and conveyancing costs (including 6 Legal/74189757_2 transfer of title and searches). Prices are current as of May 9, 2024 and are inclusive of GST. Prices may change without notice. Packages are subject to availability. Package subject to two separate contracts relating to the building and the land respectively. Photographs may depict fixtures, finishes and features not supplied by G.J. Gardner Homes. Excluded items may include but are not limited to landscaping items such as planter boxes, retaining walls, water features, pergolas, screens, driveways and decorative items such as fencing and outdoor kitchens or barbecues. Photographs may also depict inclusions not forming part of the standard design and which may be subject to additional costs. This design and illustration remains the property of G.J. Gardner Homes and may not be reproduced in whole or in part without written consent. For detailed home pricing, please talk to a New Homes Consultant or visit our website at <https://www.gjgardner.com.au/house-and-land-pricing>. SS Family P/L ATF Trendbuild Properties trading as G.J. Gardner Homes - Brisbane Inner City West. Builders License 1209617.