



## House & Land Package

From **\$667,428\***

## Kimberley 225

4 Beds | 2 Baths | 2 Car

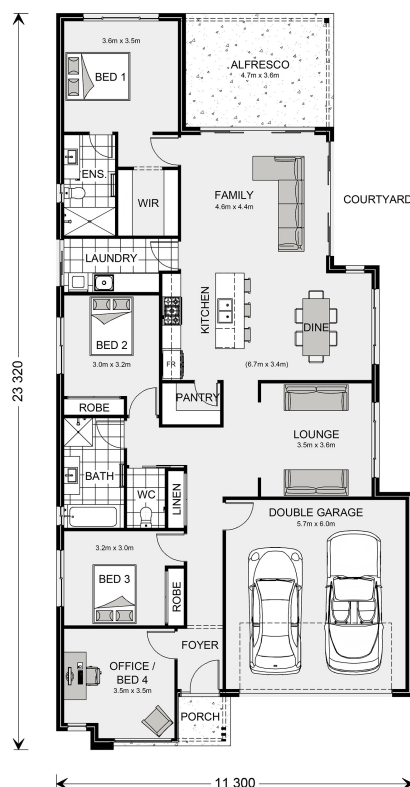
. Pimelea Way, Nikenbah

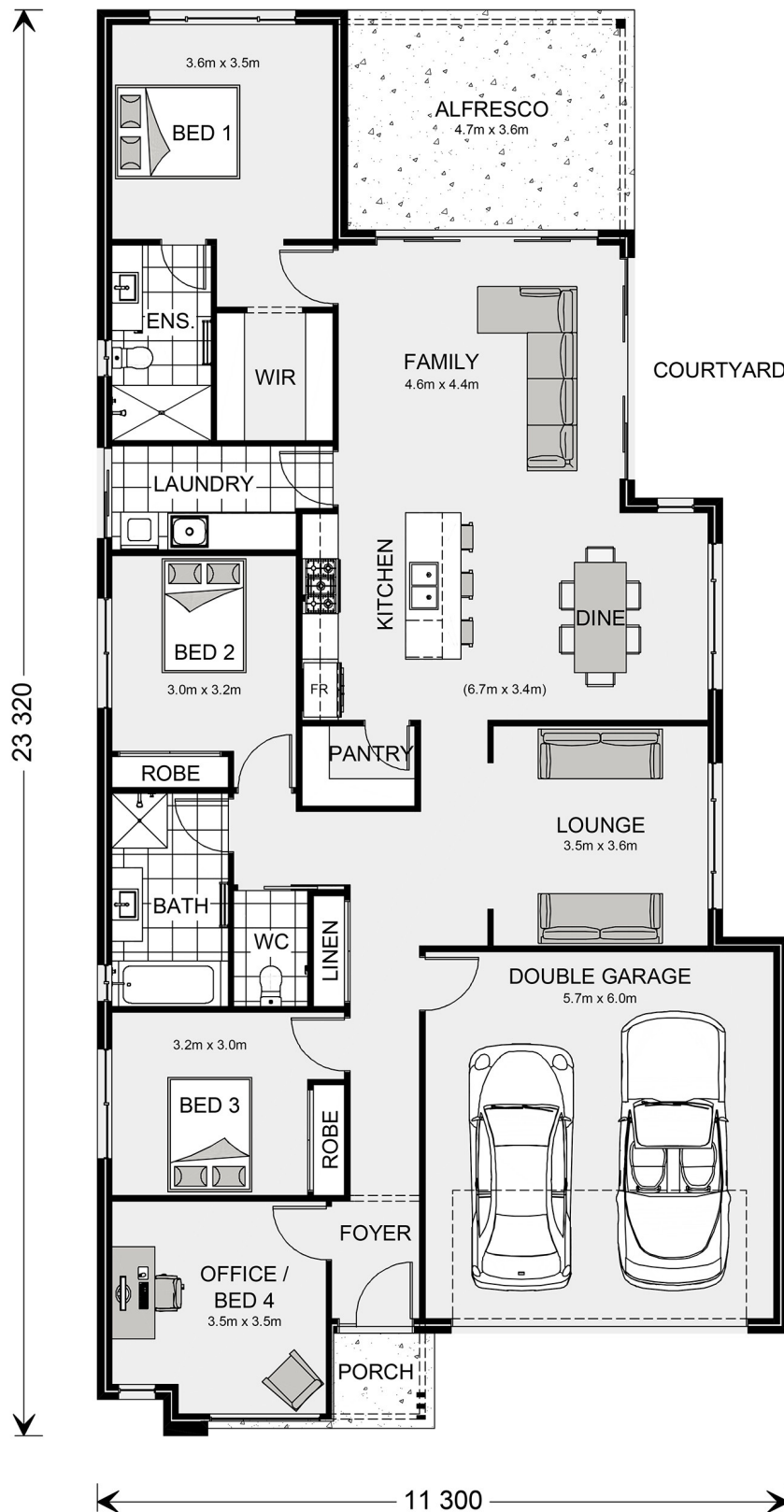
Land Area: 492 m<sup>2</sup>

Contact **Jodie Flynn** on **0437 673 737**

### Inclusions:

- + Award Package Inclusions ~ See Builder
- + Cooking Appliances Incl Dishwasher
- + Driveway Allowance
- + Six Optional Facades & Plan Changes Welcome
- + Pricing Subject to Site inspection & Soil Test





\* Package price is based on Kimberley 225 standard floor plan and standard façade (may be smaller than façade shown). Package may be subject to developer's design review panel, council final approval and G.J. Gardner Homes procedure of purchase. Package price excludes stamp duty on land, legal fees and conveyancing costs (including 6 Legal/74189757\_2 transfer of title and searches). Prices are current as of May 21, 2024 and are inclusive of GST. Prices may change without notice. Packages are subject to availability. Package subject to two separate contracts relating to the building and the land respectively. Photographs may depict fixtures, finishes and features not supplied by G.J. Gardner Homes. Excluded items may include but are not limited to landscaping items such as planter boxes, retaining walls, water features, pergolas, screens, driveways and decorative items such as fencing and outdoor kitchens or barbecues. Photographs may also depict inclusions not forming part of the standard design and which may be subject to additional costs. This design and illustration remains the property of G.J. Gardner Homes and may not be reproduced in whole or in part without written consent. For detailed home pricing, please talk to a New Homes Consultant or visit our website at <https://www.gjgardner.com.au/house-and-land-pricing>. G.J. Hervey Bay Pty Ltd trading as Trading as G.J. Gardner Homes Fraser Coast. Builders License 1172776.