



House & Land Package

From **\$1,368,477***

Castaway 335

5 Beds | 3.5 Baths | 2 Cars

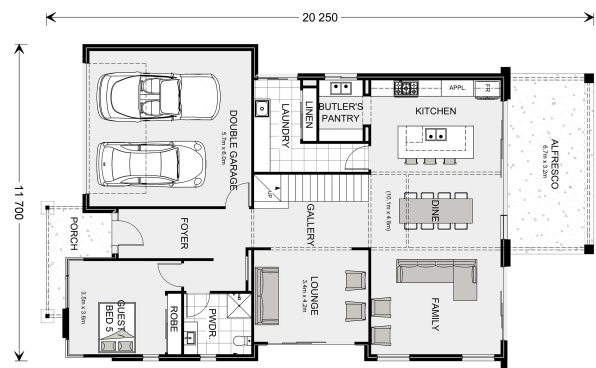
tba Waterside Blvd, Shoal Point

Land Area: 711 m²

Contact **Lyneece Joblin** on **0418 731 441**

Inclusions:

- + 2550 ceiling upgrade to both floors
- + Builders range stone benchtops throughout
- + Air conditioning throughout
- + Silver range tiles to alfresco
- + Exposed aggregate driveway
- + Silver range carpet and vinyl plank flooring



* Price listed is indicative only and does not include stamp duty, legal fees or conveyancing costs. Images may depict optional upgrades including fixtures, fencing, landscaping, features, facades, finishes and/or other items which are not included in the stated price. Further information overleaf. For further information, please talk to a New Homes Consultant or visit our website at <https://www.gjgardner.com.au/house-and-land-pricing>.

