






House & Land Package

From **\$1,550,000***

Freshwater 315

5  3.5  2 

27 Yandanooka, austral

Land Area: 403 m²

Contact **Sam Macri** on **0423 353 055**

Inclusions:

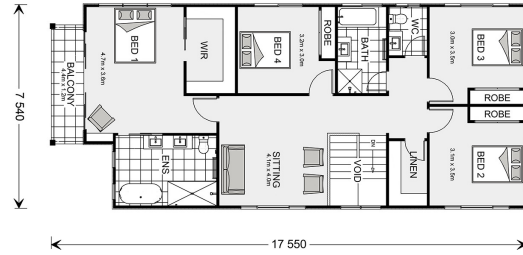
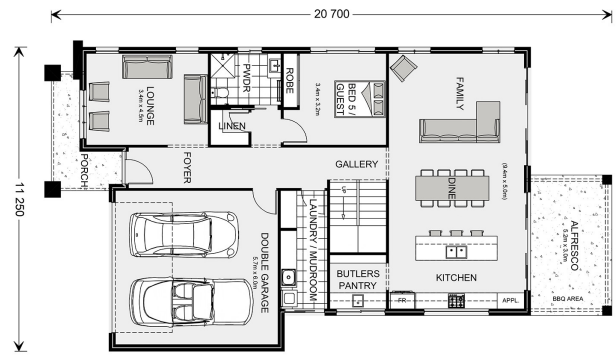
- + Single Fixe Price Contract - Under Construction - Ready in June 2025
- + Turnkey Ready with Premium Finishes – This home includes 2.7m ceiling heights on the ground floor, an elegant oak staircase with glass balustrades, custom vanities, and downlights throughout, ready for you to move in without the need for additional work.
- + Complete Outdoor Alfresco Kitchen – Perfect for entertaining, the covered alfresco area comes with a 40mm stone benchtop, a 1200mm BBQ, and ample space for outdoor gatherings.
- + Comprehensive Security & Smart Living Features – Equipped with

* Price listed is indicative only and does not include stamp duty, legal fees or conveyancing costs. Images may depict optional upgrades including fixtures, fencing, landscaping, features, facades, finishes and/or other items which are not included in the stated price. Further information overleaf. For further information, please talk to a New Homes Consultant or visit our website at <https://www.gjgardner.com.au/house-and-land-pricing>.

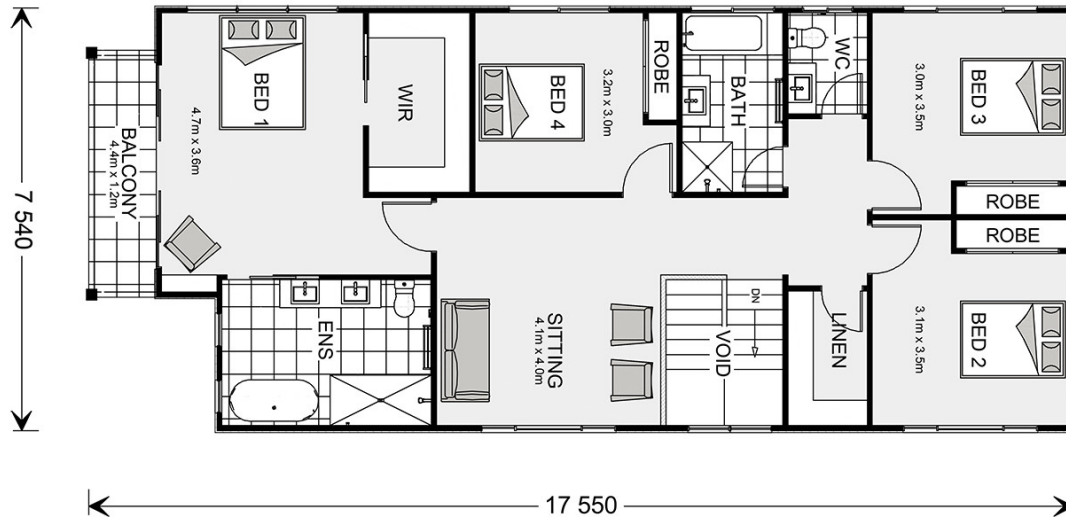
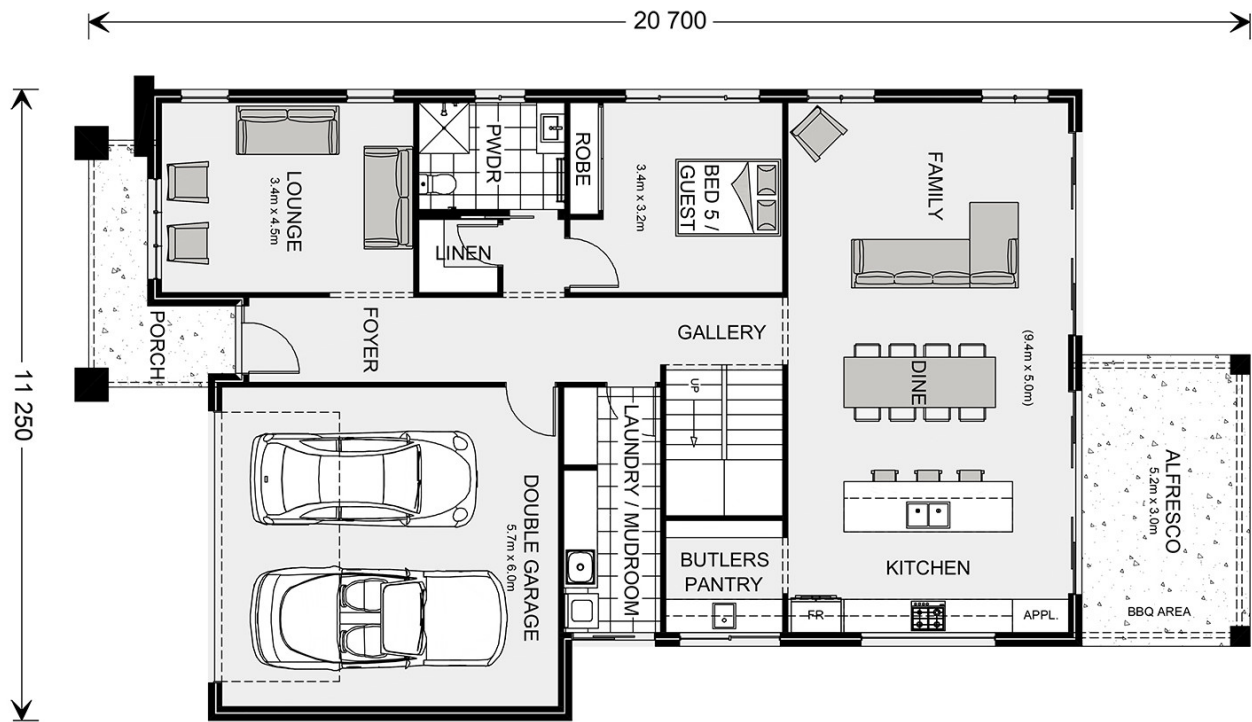
an alarm system, CCTV, intercom, ceiling fans, and solar panels, this home is designed for comfort, efficiency, and peace of mind.

+ Gourmet Kitchen & Butler's Pantry – Equipped with 40mm stone benchtops and Smeg appliances, including a microwave and dishwasher, plus a spacious butler's pantry—ideal for those who love to entertain or cook in style.

+ Build with Australia's most trusted builder



* Package price is based on Freshwater 315 standard floor plan and standard façade (may be smaller than façade shown). Package may be subject to developer's design review panel, council final approval and G.J. Gardner Homes procedure of purchase. Package price excludes stamp duty on land, legal fees and conveyancing costs (including 6 Legal/74189757_2 transfer of title and searches). Prices are current as of April 23, 2025 and are inclusive of GST. Prices may change without notice. Packages are subject to availability. Package subject to two separate contracts relating to the building and the land respectively. Photographs may depict fixtures, finishes and features not supplied by G.J Gardner Homes. Excluded items may include but are not limited to landscaping items such as planter boxes, retaining walls, water features, pergolas, screens, driveways and decorative items such as fencing and outdoor kitchens or barbeques. Photographs may also depict inclusions not forming part of the standard design and which may be subject to additional costs. This design and illustration remains the property of G.J Gardner Homes and may not be reproduced in whole or in part without written consent. For detailed home pricing, please talk to a New Homes Consultant or visit our website at <https://www.gjgardner.com.au/house-and-land-pricing>. Governor Group Pty Ltd trading as G.J. Gardner Homes - Liverpool . Builders License 244464C.



* Package price is based on Freshwater 315 standard floor plan and standard façade (may be smaller than façade shown). Package may be subject to developer's design review panel, council final approval and G.J. Gardner Homes procedure of purchase. Package price excludes stamp duty on land, legal fees and conveyancing costs (including 6 Legal/74189757_2 transfer of title and searches). Prices are current as of April 23, 2025 and are inclusive of GST. Prices may change without notice. Packages are subject to availability. Package subject to two separate contracts relating to the building and the land respectively. Photographs may depict fixtures, finishes and features not supplied by G.J Gardner Homes. Excluded items may include but are not limited to landscaping items such as planter boxes, retaining walls, water features, pergolas, screens, driveways and decorative items such as fencing and outdoor kitchens or barbecues. Photographs may also depict inclusions not forming part of the standard design and which may be subject to additional costs. This design and illustration remains the property of G.J Gardner Homes and may not be reproduced in whole or in part without written consent. For detailed home pricing, please talk to a New Homes Consultant or visit our website at <https://www.gjgardner.com.au/house-and-land-pricing>. Governor Group Pty Ltd trading as G.J. Gardner Homes - Liverpool . Builders License 244464C.