



## House & Land Package

From **\$938,731\***

## Bridgewater 173

3 | 2 | 2

### Lot 137 Eden Cove, Eden

Land Area: 550 m<sup>2</sup>

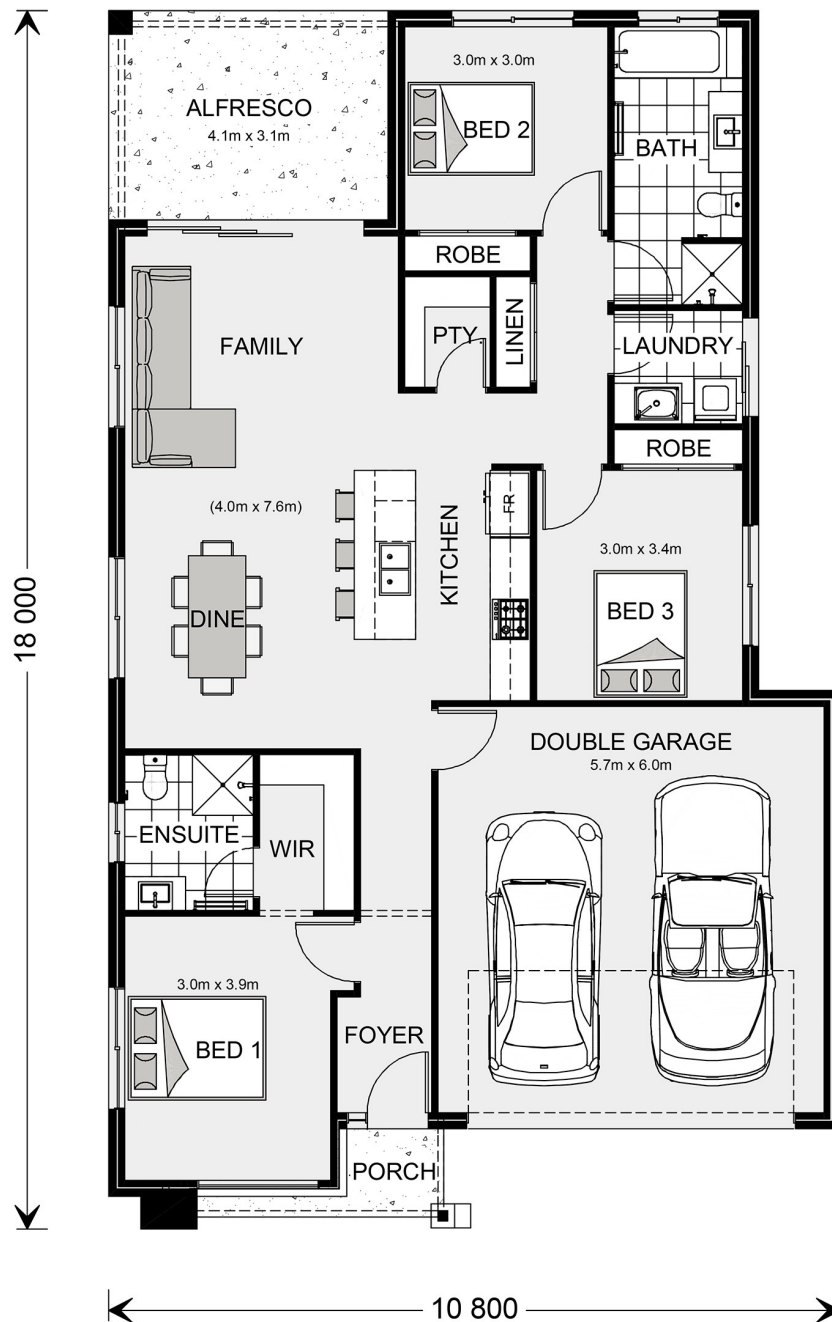
Contact **Stephanie Smith** on 0264956200

### Inclusions:

- + Concrete driveway
- + Carpet and vinyl plank floor coverings throughout (tiles to all wet areas)
- + 60cm Smeg appliances to Kitchen (cooktop, oven, rangehood, dishwasher)
- + Mitsubishi Inverter Reverse Cycle A/C
- + LED downlights
- + Clothesline



\* Price listed is indicative only and does not include stamp duty, legal fees or conveyancing costs. Images may depict optional upgrades including fixtures, fencing, landscaping, features, facades, finishes and/or other items which are not included in the stated price. Further information overleaf. For further information, please talk to a New Homes Consultant or visit our website at <https://www.gjgardner.com.au/house-and-land-pricing>.



\* Package price is based on Bridgewater 173 standard floor plan and standard façade (may be smaller than façade shown). Package may be subject to developer's design review panel, council final approval and G.J. Gardner Homes procedure of purchase. Package price excludes stamp duty on land, legal fees and conveyancing costs (including 6 Legal/74189757\_2 transfer of title and searches). Prices are current as of May 13, 2024 and are inclusive of GST. Prices may change without notice. Packages are subject to availability. Package subject to two separate contracts relating to the building and the land respectively. Photographs may depict fixtures, finishes and features not supplied by G.J. Gardner Homes. Excluded items may include but are not limited to landscaping items such as planter boxes, retaining walls, water features, pergolas, screens, driveways and decorative items such as fencing and outdoor kitchens or barbeques. Photographs may also depict inclusions not forming part of the standard design and which may be subject to additional costs. This design and illustration remains the property of G.J. Gardner Homes and may not be reproduced in whole or in part without written consent. For detailed home pricing, please talk to a New Homes Consultant or visit our website at <https://www.gjgardner.com.au/house-and-land-pricing>. Sapphire Coast Builders Pty Ltd trading as G.J. Gardner Homes - Sapphire Coast. Builders License 338197C.