

# Fernbank Estate.



## **Allow yourself to imagine the lifestyle you've always wanted, in the home you deserve!**

Are you looking for a home with generous, well-designed spaces? Enter the Fernbank Estate, exclusive to G.J. Gardner Homes, which weaves together a large family room, adjoining dining area and kitchen with four generously sized bedrooms.

The alfresco leads off the dining room, while two verandahs run either side of the family room, leading seamlessly from indoors to outdoors and allowing natural light and cooling breezes to move throughout the home.

Do you want to a home where you can relax, entertain and welcome guests? Welcome to Fernbank Estate, perfectly designed for the needs of today's modern family.

The Fernbank Estate designs offer individually crafted facades that will inspire you by providing a choice of homes that reflect your personal lifestyle and preferences.

Contact us on **132 789**  
or visit [gjgardner.com.au](http://gjgardner.com.au)

Welcome **home.**

**G.J. Gardner.** HOMES

RESORT



COLONIAL



## **Fernbank Estate facade options.**

G.J. Gardner's tailored facades give you the opportunity to personalise your home. With Resort, Colonial, Classic and Urban facades to choose from, you can bring your home to life, making it as individual as you are!

Images may depict fixtures, finishes and features not supplied by G.J. Gardner Homes. These items include planter boxes, retaining walls, water features, pergolas, screens and decorative landscaping items such as fencing and outdoor kitchens and barbecues.



CLASSIC



URBAN



## **With you every step of the way.**

Partner with G.J. Gardner Homes, and together we'll transform your ideas into reality. Let us guide you through the entire home building process. With our local knowledge and insights coupled with access to your area's local architects, tradesmen and homebuilders, you know you'll be completely looked after by G.J. Gardner Homes.

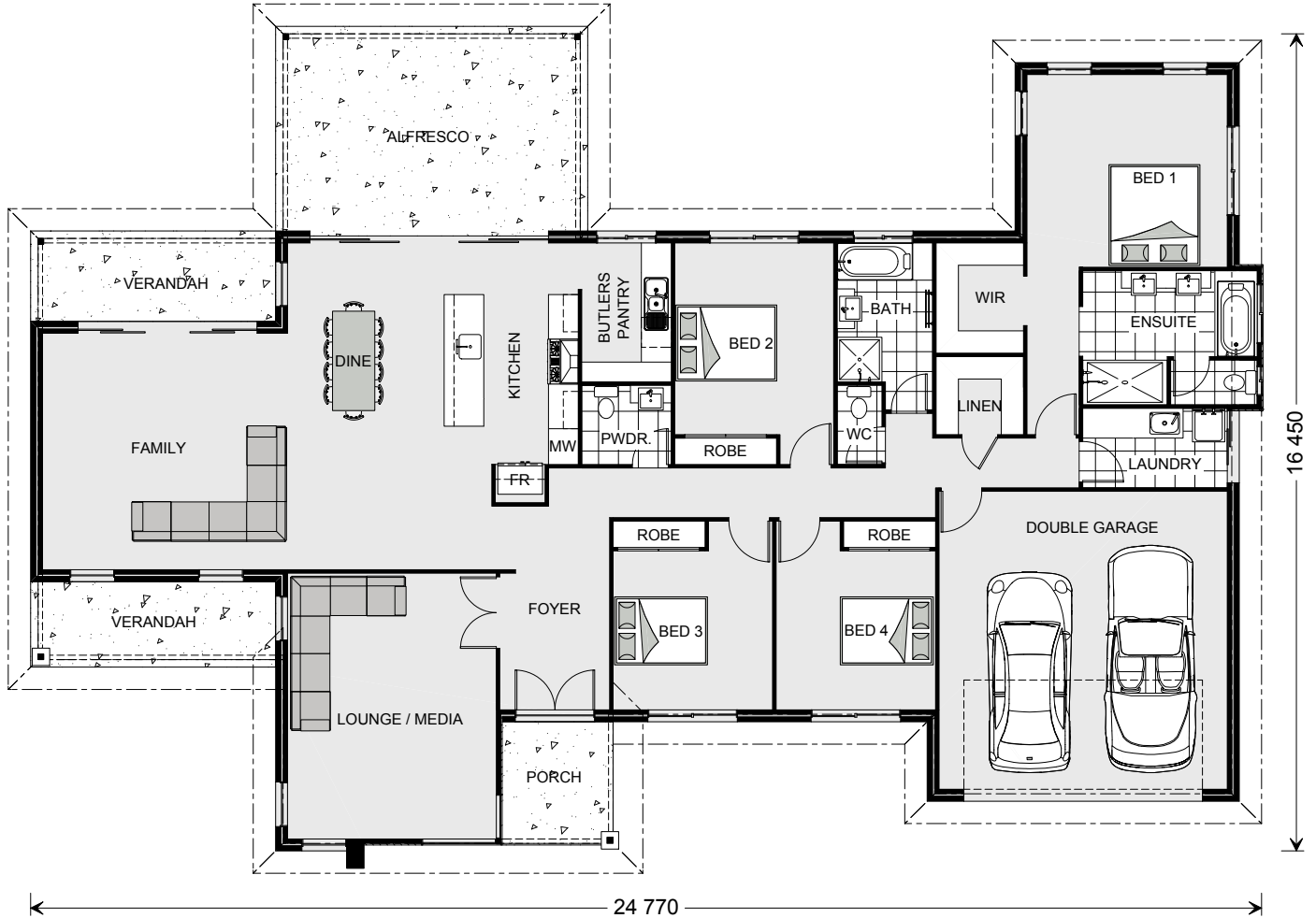
No two houses ever need to be the same. We have 24 flexible home designs to choose from, so your fully customised home reflects your family's unique lifestyle and budget.

**Fernbank  
Estate 305.**

4  2.5  2 

**FEATURES**

- + Butler's pantry
- + Lounge/media room
- + 2x Verandahs
- + Alfresco living



**SPECIFICATIONS**

**Living:** 216.9 sq.m  
**Garage:** 38.1 sq.m  
**Alfresco:** 26.5 sq.m  
**Porch:** 5.5 sq.m  
**Verandah:** 17.5 sq.m  
**Total:** 304.5 sq.m

**TOTAL AREA**

**Width:** 24.770 m  
**Length:** 16.450 m

**NOTES**

---



---



---

# Fernbank Estate 253.

4  2.5  2 

## FEATURES

- + Verandah
- + Butler's pantry
- + Large linen cupboard
- + Lounge/media room



The facades shown on this brochure are not representations of this floor plan.

## SPECIFICATIONS

**Living:** 186.4 sq.m  
**Garage:** 37.6 sq.m  
**Alfresco:** 16.7 sq.m  
**Porch:** 6.0 sq.m  
**Verandah:** 6.7 sq.m  
**Total:** 253.4 sq.m

## TOTAL AREA

**Width:** 23.900 m  
**Length:** 14.110 m

## NOTES

---



---



---

---

**Locals always  
at hand.**

Designing and building your ideal home is an exciting experience, and when you partner with professional and established builders – G.J. Gardner Homes, the journey will be fulfilling and rewarding.



Internal photographs are from different G.J. Gardner Homes to those featured in this brochure.